

ACCO 2350G

SPECIFICATION SHEET

Distributor/Tipper/Hauler

H
E
A
V
Y

R
A
N
G
E



IVECO

ENGINE

Cummins ISC-05 (ADR80/02 approved)

Type: Turbocharged, aftercooled, electronically direct injected four-stroke diesel with cruise control and programmable hand throttle/PTO control.

Number of cylinders	6
RAC HP rating	48.4
Total displacement	8.3 litre
Maximum output	260hp (194kW) @ 2000rpm
Maximum torque	800 lb ft (1085Nm) @ 1300rpm
Maximum output	285hp (213kW) @ 2000rpm
Maximum torque	800 lb ft (1085Nm) @ 1300rpm
Maximum output	315hp (235kW) @ 2000rpm
Maximum torque	950 lb ft (1288Nm) @ 1300rpm

Governed engine speed: 2200rpm.

Clutch engagement torque: 678Nm.

Road speed limiting to 100kmh.

Donaldson Cyclopac 356mm dry element air cleaner.

Perforated muffler heat shield

Optional: Exhaust brake.

TRANSMISSIONS

Eaton RT-8908ALL 10 speed constant mesh.

Eaton FR-9210B 10 speed constant mesh.

Eaton RTLO-12913A 13 speed constant mesh.

Allison Gen 4 3500 6 speed.

Optional: Rear engine PTO with pump mounting bracket.

Transmission Chelsea PTO 1.16 times engine speed.

REAR AXLE

Meritor MT20-145G (for 6x4 or 8x4)

Capacity: 18.1 tonne.

Ratios: 3.73, 4.10, 5.29, 6.43.

Meritor RS23-161 (for 4x2)

Capacity: 10.4 tonne.

Ratios: 3.73,

Optional: Driver controlled differential locks.

REAR SUSPENSION

Hendrickson HAS230 (for 4x2)

Type: Air with shock absorbers and dump control.

Capacity: 10.0 tonne.

Hendrickson HAS400 (for 6x4 or 8x4)

Type: Air with shock absorbers and dump control.

Capacity: 18.0 tonne.

Meritor AC6P (for 6x4 or 8x4)

Type: Single point 6-rod.

Capacity: 18.1 tonne.

FRONT AXLE

Dana I-140SG

Type: Forged steel I beam.

Capacity: 6.6 tonne.

FRONT SUSPENSION

Type: Single steer: Multi-leaf springs with threaded pins and bushes and double acting shock absorbers.

Capacity: 6.7 tonne.

Twin Steer Heavy duty multi-leaf springs with threaded pins and bushes and double acting shock absorbers.

Capacity: 13.4 tonne

BRAKES

Type: Dual air S cam.

Front: **Meritor Q-Plus** 419mm diameter x 152mm drum brakes.

Rear: **Meritor Q-Plus** 419mm diameter x 178mm drum brakes.

Park: Spring actuated park brake acting on rear wheels.

Optional:

Dessicant type air dryer: (CR2000).

STEERING

Sheppard MI 10 power steering with gear driven pump.

Tilting and telescoping steering column with 463mm diameter steering wheel.

FUEL SYSTEM

270 litre cylindrical aluminium tank mounted right hand side of chassis.

Engine mounted paper element fuel filter:

CHASSIS

Type: High tensile, heat treated, alloy steel channel.

Yield strength: 760 MPa.

Standard chassis dimensions: 257mm x 89mm x 8mm.

Standard section modulus: 243cm³.

FUPD for all 4x2 and 6x4 models.

Heavy duty centrally mounted front towing pin.

Square rear end of frame.

Optional:

Hydraulic pump mounting bracket

Full channel frame reinforcement.

Hauler pack, comprising trailer connections for air and electrical at rear of cab, 5th wheel mounting angles, rear frame taper, deck plate, steps and handles, rear work lamp, tail lamp brackets and mudflaps.

ELECTRICAL SYSTEM

Type: 12 volt, negative to earth.

Batteries: 3 x 12V, 550amp SAE cold cranking current, maintenance free.

Alternator: 12V 100amp.

Headlamps: 60/55 watt circular quartz halogen.

Reverse warning buzzer.

Optional: Cab roof mounted revolving amber light.

CLUTCH

Eaton SAS 1402 twin plate ceramic

Diameter: 356mm.

Lining area: 1208cm².

WHEELS & TYRES

Wheels: 6-spoke cast hubs with 8.25 x 22.5 DC,

Front tyres: **Michelin XZE2+** 295/80R22.5 (6.5 tonne FA rating.)

11R22.5 for 8x4. Tubeless radial

Rear tyres: **Michelin XDE2+** 11R22.5 tubeless radial.

Spare rim supplied loose.

Optional:

Steel or aluminium 10-stud disc wheels.

Spare wheel carrier (supplied loose).

Alternative **Michelin** tyre tread patterns.

COOLING SYSTEM

Radiator area: 5049cm².

Charge cooler frontal area: 4461cm² up to 285Hp &

5015 cm² for 315Hp.

Air to oil transmission cooler for automatic models

mounted on the chassis.

Viscous drive fan, crankshaft driven.

Supplementary cooling fan.

Heavy duty radiator guard and stone shield.

DRIVESHAFTS

Spicer 1810 Series main shaft with **Eaton** transmission.

Spicer 1710 Series main shaft with **Allison** transmission.

Spicer 1710 Series inter-axle shaft with all transmissions.

CAB

Construction

2180mm wide steel cab with hydraulic lift and latch.

Four-point cab mounting system with rubber block front and air springs dampers at the rear.

Double-sided zinc steel exterior and floor panels.

Electro-phoretic deposited undercoat with acrylic hi-bake enamel finishing coat.

Laminated safety glass windscreen, toughened safety glass elsewhere.

Features

Isringhausen air-suspended driver's seat with integral lap/sash seat belt, fore and aft isolator and adjustable lumbar support.

Isringhausen fixed passenger's seat with integral lap/sash seat belt Power Windows

Sound insulating vinyl floor mats.

Overhead console.

Air conditioning.

Triple electric 2-speed windscreen wipers/washers with intermittent speed.

Heater-demister with 3-speed fan including face level vents.

Twin speaker, AM/FM radio/CD with auto tune, digital clock and removable face security.

Heated west coast type mirrors with convex section.

Jack, rim wrench, handle and extension.
 Interior and exterior sunvisors.
 Chassis-mounted dual air horns.
 In-cab body builder electrical and air supplies including remote PTO
 throttle wiring connectors and 12V accessory socket.

Optional:

Remote operated motorised mirrors.
 Fixed double or single air suspended passenger seat.
 Heavy duty trim package comprising heavy duty Urethane floor
 mats, passenger foot rest and door scuff plates.
 1.5kg dry chemical fire extinguisher mounted in cab.

Instrumentation

Gauges: Electronic speedometer and tachometer; dual needle
 air pressure, coolant temperature, engine oil pressure, automatic
 transmission temperature, voltmeter; hour meter and fuel level.
 Warning lights: Brake failure, park brake activated, low engine oil
 pressure, turn signal on, hazard lights activated, high beam activated,
 cab latch insecured, power divider lock activated, driver controlled
 diff locks activated, PTO activated, cruise control activated, engine
 ECU failure, and low coolant level.
 Warning buzzer: Low brake air pressure, low oil pressure, low auto
 transmission coolant level and park brake on with door open.

MASS RATINGS

GVM 4x2		16.5 tonne
GCM 4x2		36.0 tonne
GVM 6x4		24.5 tonne
GCM 6x4	auto	30.0 tonne
GCM 6x4	manual	42.5 tonne
GVM 8x4		30.0 tonne
GCM 8x4		42.5 tonne

All ratings apply with suitably rated engine, transmission and suspension.
 GVM, GCM, driveline, frame, and suspension combinations are subject to application
 engineering review.

CHASSIS DIMENSIONS (dimensions in mm)

4x2

WB	3800	
AF	890	
CA	3430	
CF	4320	
L	6200	
Turning circle [£]	12900	

6x4

WB	4200	6000
AF	1870	2800
CA	3830	5630
CF	5700	8430
L	7355	10310
Turning circle [£]	17270	21000

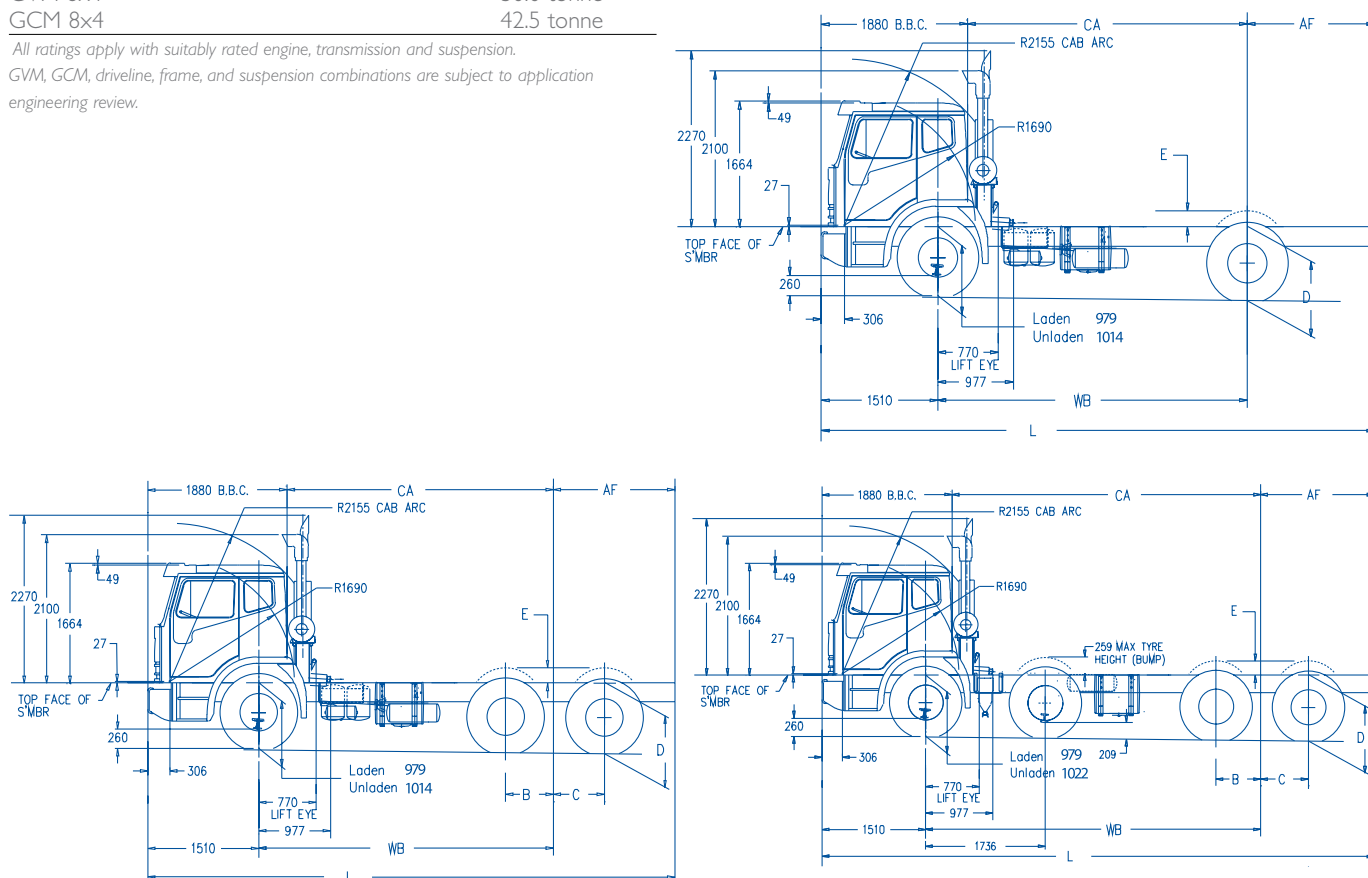
8x4

WB	6400	
AF	2400	
CA	6030	
CF	8430	
L	10310	
Turning circle [£]	23490	

Chassis Width: Standard 867 With reinforcement 883

[£]For unladen cab-chassis. For wall-to-wall turning circle add 1740 mm.

Refer to Bodybuilder diagrams for fuel tank lengths, locations and further details.



Suspension (dimensions in mm)

	B	C	D		E
			Laden	Unladen	
Hendrickson HAS230 4x2	-	-	1000	1025	105
Hendrickson HAS400 6x4 & 8x4	658	658	1000	1025	105
Meritor AC6P 6x4 & 8x4	620	700	996	1055	154



ACCO 2350G

Distributor/Tipper/Hauler

Important

The specifications and images ("material") in this brochure were correct at the time of publication but are subject to change without notice. The material is provided by way of general description only and all measurements and specifications should be regarded as approximate. Images are for illustration purposes only and may show non-standard options and aftermarket accessories. Availability of vehicles and all other items referred to in this brochure will depend on local and overseas supply conditions and vary from time to time. Accordingly, before placing an order you should consult your nearest authorised Iveco dealer to obtain accurate and up to date information on model specifications, features, availability and pricing.

IVECO

**Iveco Trucks
Australia Limited**

ABN 86 004 065 061

Princes Hwy,
Dandenong Victoria 3175

www.iveco.com.au