

ACCO 2350G

SPECIFICATION SHEET

Agitator

H
E
A
V
Y

R
A
N
G
E



IVECO

ENGINE

Cummins ISC-05 (ADR80/02 approved)

Type: Turbocharged, constant pressure direct injected diesel engine with cruise control and programmable hand throttle/ PTO control.

Number of cylinders	6
RAC HP rating	48.4
Total displacement	8.3 litre
Maximum output	260hp (194kW) @ 2000rpm
Maximum torque	800 lb ft (1085Nm) @ 1300rpm
Maximum output	285hp (213kW) @ 2000rpm
Maximum torque	800 lb ft (1085Nm) @ 1300rpm
Maximum output	315hp (235kW) @ 2000rpm
Maximum torque	950 lb ft (1288Nm) @ 1300rpm

Governed engine speed: 2200rpm.

Clutch engagement torque: 678Nm.

Road speed limiting to 100kmh.

Idle timer:

Perforated muffler heat shield.

Donaldson Cyclopac 356mm dry element air cleaner.

Optional: Exhaust brake.

TRANSMISSIONS

Eaton RTO-I 1909ALL 11 speed constant mesh.

Allison Gen 4 3500 6 speed automatic.

Allison Gen 4 3200 6 speed automatic with 315hp.

Rear engine PTO with pump mounting brackets (manual only).

Transmission-mounted PTO, 1.16 times engine speed with pump mounting brackets.

REAR AXLE

Meritor MT20-I45GA with aluminium differential carriers.

(Same as RT40-I45GA)

Capacity: 18.1 tonne.

Ratios: 5.29, 6.43.

Optional: Alloy rear hubs.

Meritor MT20-I45G (Same as RT40-I45G)

Capacity: 18.1 tonne.

Ratios: 5.29, 6.43.

Optional:

Driver controlled differential locks both axles.

Alloy rear hubs.

REAR SUSPENSION

Hendrickson HN402

Type: Walking beam with rubber bolster VariRate springs and shock absorbers.

Capacity: 18.0 tonne.

Hendrickson HAS460

Type: Air with shock absorbers and dump control.

Capacity: 18.0 tonne.

FRONT AXLE

Dana I-140SG

Type: Forged steel I beam.

Capacity: 6.6 tonne.

FRONT SUSPENSION

Single steer type: HD Parabolic steel spring with threaded pins and bushes and double acting shock absorbers.

Capacity: 7.2 tonne.

Twin Steer type: HD Multi-leaf springs with threaded pins and bushes and double acting shock absorbers.

Capacity: 13.4 tonne.

Optional:

Airtek: Air suspension with integrated axle, leaf springs and shock absorbers.

Capacity: 6.6 tonne (single steer) 13.2 tonne (twin steer)

BRAKES

Type: Dual air S cam.

Front: **Meritor Q-Plus** 419mm diameter x 152mm drum brakes.

Rear: **Meritor Q-Plus** 419mm diameter x 178mm drum brakes.

Park: Spring actuated park brake acting on rear wheels on 6x4 and on second steer and rear wheels on 8x4.

Optional:

Centrifuse brake drums on all axles.

Dessicant type air dryer (CR 2000).

STEERING

Sheppard MI 10 power steering with gear driven pump.

Tilting and telescoping steering column with 463mm diameter steering wheel.

FUEL SYSTEM

6x4 130-litre capacity cylindrical aluminum tank

8x4 270-litre capacity cylindrical aluminum tank

Tanks mounted right hand side of chassis.

Engine mounted paper element fuel filter:

CHASSIS

Type: High tensile, heat treated, alloy steel channel.

Yield strength: 760 MPa.

Standard chassis dimensions: 257mm x 89mm x 8mm.

Standard section modulus: 243cm³.

Heavy duty centrally mounted front towing pin.

Square rear end of frame.

FUPD on 6x4 model.

Hydraulic pump mounting bracket to suit.

ELECTRICAL SYSTEM

Type: 12 volt, negative to earth.

Batteries: 3 x 12V, 550amp SAE cold cranking current, maintenance free.

Alternator: 12V 100amp.

Headlamps: 60/55 watt circular quartz halogen.

Driving lights: 55 watt circular quartz halogen.

Reverse warning buzzer:

Optional: Cab roof mounted revolving amber light.

CLUTCH

Eaton SAS 1402 twin plate ceramic

Diameter: 356mm.

Lining area: 1208cm².

WHEELS & TYRES

Wheels: 6-spoke cast hubs with 8.25 x 22.5 DC,

Front tyres: **Michelin XZE2+** 295/80R22.5 (6.5 tonne FA rating)

11R22.5 for 8x4. Tubeless radial

Rear tyres: **Michelin XDE2+** 11R22.5 tubeless radial.

Spare rim supplied loose.

Optional:

285PCD Alcoa Alloy wheels with machine finish

Durabright finish for alloy wheels

Spare wheel carrier (supplied loose).

Alternative **Michelin** tyre sizes and tread patterns available.

COOLING SYSTEM

Radiator area: 5049cm².

Charge cooler frontal area: 4461cm² up to 285Hp & 5015 cm² for 315Hp.

Air to oil transmission cooler for automatic models mounted on the chassis.

Viscous drive fan, crankshaft driven.

Heavy duty radiator guard and stone shield.

Optional: Supplementary cooling fan.

DRIVESHAFTS

Spicer 1810 Series main shaft with **Eaton** transmission.

Spicer 1710 Series main shaft with **Allison** transmission.

Spicer 1710 Series inter-axle shaft with all transmissions.

CAB

Construction

2180mm wide galvanized steel cab with hydraulic lift and latch.
 Four-point cab mounting system with rubber block front and air springs dampers at the rear.
 Double-sided zinc steel exterior and floor panels.
 Electro-phoretic deposited undercoat with acrylic hi-bake enamel finishing coat.
 Laminated safety glass windscreen, toughened safety glass elsewhere.

Features

Isringhausen air-suspended driver's seat with integral lap/sash seat belt, fore aft isolator and adjustable lumbar support.
Isringhausen fixed passenger's seat with integral lap/sash seat belt.
 Power Windows.
 Overhead console.
 Air conditioning with pollen filter.
 Heavy duty trim package comprising heavy duty Urathane floor mats, passenger foot rest and door scuff plates.
 Triple electric 2-speed windscreen wipers/washers with intermittent speed.
 Heater-demister with 3-speed fan including face level vents.
 Heated west coast type mirrors with convex section.
 Twin speaker, AM/FM radio/CD with auto tune, digital clock and removable face security.
 Jack, rim wrench, handle and extension.
 Interior and exterior sunvisors.
 Chassis-mounted dual air horns.
 In-cab body builder electrical and air supplies including remote PTO throttle wiring connectors and 12V accessory socket.
Optional:
 Remotely operated motorised mirrors
 Fixed double or air suspended single passenger seat..

Instrumentation

Gauges: Electronic speedometer and tachometer, dual needle air pressure, coolant temperature, engine oil pressure, automatic transmission temperature, voltmeter, hour meter and fuel level.
 Warning lights: Brake failure, park brake activated, low engine oil pressure, turn signal on, hazard lights activated, high beam activated, cab latch insecured, power divider lock activated, driver controlled diff locks activated, PTO activated, cruise control activated, engine ECU failure, high auto transmission oil temperature and low coolant level.
 Warning buzzer: Low brake air pressure, low oil pressure, low auto transmission coolant level and park brake on with door open.

MASS RATINGS

GVM 6x4		24.5 tonne
GCM 6x4		30.0 tonne
GVM 8x4		30.0 tonne
GCM 8x4	auto	30.0 tonne
GCM 8x4	manual - 315 Hp rating	42.5 tonne

All ratings apply with suitably rated engine, transmission and suspension.
 GVM, GCM, driveline, frame, and suspension combinations are subject to application engineering review.

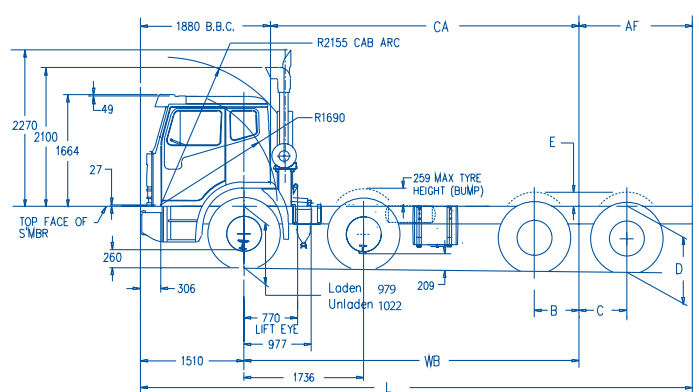
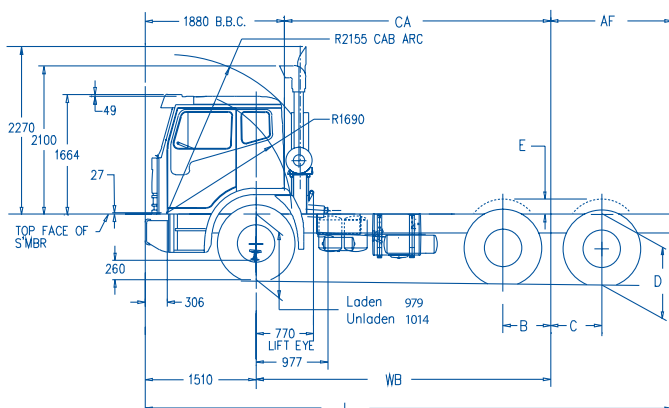
CHASSIS DIMENSIONS (dimensions in mm)

WB	4000#	5000*	5400*
AF	1870#	1800*	1800*
CA	3630#	4630*	5030*
L	7380#	8310*	8710*
Turning circle [£]	16450#	18350*	19820*
Chassis Width	867	867	867

6x4 *8x4

£For unladen cab-chassis. For wall-to-wall turning circle add 1740 mm.

Refer to bodybuilder diagrams for fuel tank lengths, locations and further details.



Suspension (dimensions in mm)

	B	C	D		E
			Laden	Unladen	
Hendrickson HN402	650	694	964	1041	172
Hendrickson HAS460	658	658	1000	1025	105
Hendrickson PAX460	664	669	987	987	114



ACCO 2350G

Agitator

Important

The specifications and images ("material") in this brochure were correct at the time of publication but are subject to change without notice. The material is provided by way of general description only and all measurements and specifications should be regarded as approximate. Images are for illustration purposes only and may show non-standard options and aftermarket accessories. Availability of vehicles and all other items referred to in this brochure will depend on local and overseas supply conditions and vary from time to time. Accordingly, before placing an order you should consult your nearest authorised Iveco dealer to obtain accurate and up to date information on model specifications, features, availability and pricing.

IVECO

**Iveco Trucks
Australia Limited**

ABN 86 004 065 061

Princes Hwy,
Dandenong Victoria 3175

www.iveco.com.au