

## ENGINE

Cummins ISC-05 (ADR80/02 approved)

Type: Turbocharged, constant pressure direct injected diesel engine with cruise control and programmable hand throttle/ PTO control.

Number of cylinders: 6

RAC HP rating: 48.4

Total displacement: 8.3 litre

Maximum output: 260hp (194kW) @ 2000rpm

Maximum torque: 800 lb ft (1085Nm) @ 1300rpm

Maximum output: 285hp (213kW) @ 2000rpm

Maximum torque: 800 lb ft (1085Nm) @ 1300rpm

Maximum output: 315hp (235kW) @ 2000rpm

Maximum torque: 950 lb ft (1288Nm) @ 1300rpm

Governed engine speed: 2200rpm.

Clutch engagement torque: 678Nm.

Road speed limiting to 100kmh.

Donaldson Cyclopac 356mm dry element air cleaner.

Perforated muffler heat shield.

*Optional:* Exhaust brake.

## TRANSMISSIONS

Eaton RT-8908ALL 10 speed constant mesh.

Eaton FR-9210B 10 speed constant mesh.

Eaton RTLO-12913A 13 speed constant mesh.

Allison Gen 4 3500 6 speed.

*Optional:*

Rear engine PTO with pump mounting bracket.

Transmission Chelsea PTO 1.16 times engine speed.

## REAR AXLE

Meritor MT20-145G (for 6x4 or 8x4)

Capacity: 18.1 tonne.

Ratios: 3.73, 4.10, 5.29, 6.43.

Meritor RS23-161 (for 4x2)

Capacity: 10.4 tonne.

Ratios: 3.73

*Optional:*

Driver-controlled differential locks.

## REAR SUSPENSION

Hendrickson HAS230 (for 4x2)

Type: Air with shock absorbers and dump control.

Capacity: 10.0 tonne.

Hendrickson HAS400 (for 6x4 or 8x4)

Type: Air with shock absorbers and dump control.

Capacity: 18.0 tonne.

Meritor AC6P (for 6x4 or 8x4)

Type: Single point 6-rod.

Capacity 18.1 tonne.

## FRONT AXLE

Dana I-140SG

Type: Forged steel I beam.

Capacity: 6.6 tonne.

## FRONT SUSPENSION

Type: Single steer: Multi-leaf springs with threaded pins and bushes and double acting shock absorbers.

Capacity: 6.7 tonne.

Twin Steer Heavy duty multi-leaf springs with threaded pins and bushes and double acting shock absorbers.

Capacity: 13.4 tonne.

## BRAKES

Type: Dual air S cam.

Front: Meritor Q-Plus 419mm diameter x 152mm drum brakes.

Rear: Meritor Q-Plus 419mm diameter x 178mm drum brakes.

Park: Spring actuated park brake acting on rear wheels.

Dessicant type air dryer. (CR2000).

## STEERING

Sheppard MI 10 power steering with gear-driven pump.

Tilting and telescoping steering column with 463mm diameter steering wheel.

## FUEL SYSTEM

270-litre cylindrical aluminium tanks mounted right hand side of chassis. Engine mounted paper element fuel filter.

## CHASSIS

Type: High tensile, heat treated, alloy steel channel.

Yield strength: 760 MPa.

Standard chassis dimensions: 257mm x 89mm x 8mm.

Standard section modulus: 243cm<sup>3</sup>.

FUPD for all 4x2 and 6x4 models.

Heavy duty centrally mounted front towing pin.

Square rear end of frame.

*Optional:*

Hydraulic pump mounting bracket

Full channel frame reinforcement.

Hauler pack, comprising trailer connections for air and electrical

at rear of cab, 5th wheel mounting angles, rear frame taper, deck

plate, steps and handles, rear work lamp, tail lamp brackets and

mudflaps.

## ELECTRICAL SYSTEM

Type: 12 volt, negative to earth.

Batteries: 3 x 12V, 550amp SAE cold cranking current, maintenance free.

Alternator: 12V 130amp.

Headlamps: 60/55 watt circular quartz halogen.

Reverse warning buzzer.

*Optional:*

Cab roof mounted revolving amber light.

## CLUTCH

Eaton SAS 1402 twin plate ceramic.

Diameter: 356mm.

Lining area: 1208cm<sup>2</sup>.

## WHEELS & TYRES

Wheels: 335PCD steel 10-stud disc wheels

Front tyres: Michelin XZE2+ 295/80R22.5 (6.5 tonne FA rating.)

11R22.5 for 8x4. Tubeless radial

Rear tyres: Michelin XDE2+ 11R22.5 tubeless radial.

Spare rim supplied loose.

*Optional:*

6-spoke cast hubs with 8.25 x 22.5 DC

Aluminium 10-stud disc wheels.

Spare wheel carrier (supplied loose).

Alternative Michelin tyre tread patterns.

## COOLING SYSTEM

Radiator area: 5049cm<sup>2</sup>.

Charge cooler frontal area: 4461cm<sup>2</sup> up to 285Hp & 5015 cm<sup>2</sup> for 315Hp.

Air to oil transmission cooler for automatic models mounted on the chassis.

Viscous drive fan, crankshaft driven.

*Optional:*

Supplementary cooling fan.

Heavy duty radiator guard and stone shield.

## DRIVESHAFTS

Spicer 1810 Series main shaft with Eaton transmission.

Spicer 1710 Series main shaft with Allison transmission.

Spicer 1710 Series inter-axle shaft with all transmissions.

## CAB CONSTRUCTION

2180mm wide galvanized steel cab with hydraulic lift and latch.

Four-point cab mounting system with rubber block front and air springs dampers at the rear.

Double-sided zinc steel exterior and floor panels.

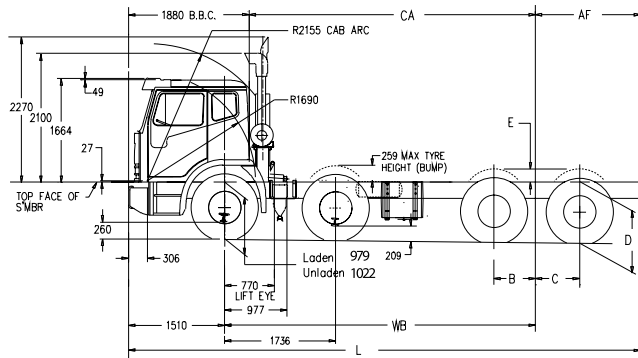
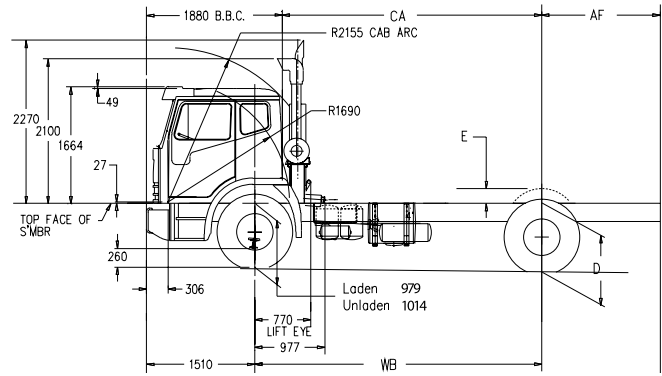
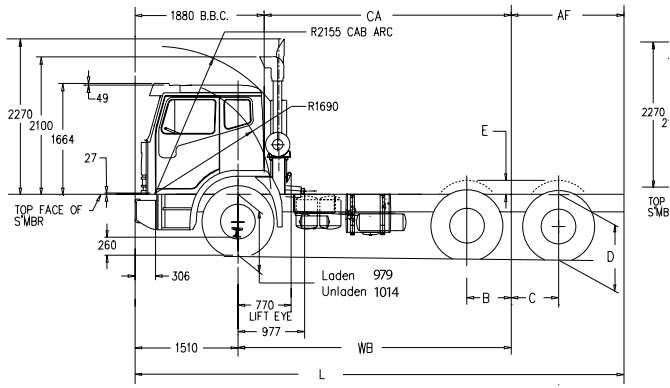
Electro-phoretic deposited undercoat with acrylic hi-bake enamel finishing coat.

Laminated safety glass windscreen, toughened safety glass elsewhere.

**ACCO**

**Distributor - Tipper - Hauler**  
SPECIFICATIONS

**IVECO**



## MASS RATINGS

GVM 4x2	16.5 tonne
GCM 4x2	36.0 tonne
GVM 6x4	24.5 tonne
GCM 6x4 auto	30.0 tonne
GCM 6x4 manual	42.5 tonne
GVM 8x4	30.0 tonne
GCM 8x4	42.5 tonne

All ratings apply with suitably rated engine, transmission, suspension and tyres. GVM, GCM, driveline, frame, and suspension combinations are subject to application engineering review.

## CHASSIS DIMENSIONS (Dimensions in mm)

4x2		
WB	3800	
AF	890	
CA	3430	
CF	4320	
L	6200	
Turning circle*	12900	
6x4		
WB	4200	6000
AF	1870	2800
CA	3830	5630
CF	5700	8430
L	7355	10310
Turning circle*	17270	21000
8x4		
WB	6400	
AF	2400	
CA	6030	
CF	8430	
L	10310	
Turning circle*	23490	
Chassis Width: Standard	867	With reinforcement 883

\*For unladen cab-chassis. For wall-to-wall turning circle add 1740 mm. Refer to Bodybuilder diagrams for fuel tank lengths, locations and further details.

## SUSPENSION (Dimensions in mm)

	B	C	D		E
			Laden	Unladen	
Hendrickson HAS230 4x2	-	-	1000	1025	105
Hendrickson HAS400					
6x4 & 8x4	658	658	1000	1025	105
Meritor AC6P 6x4 & 8x4	620	700	996	1055	154

## IVECO Trucks Australia Limited

A.B.N. 86 004 065 061  
 Princes Hwy, Dandenong, Victoria 3175  
 P.O. Box 117 Dandenong, Victoria 3175  
 Telephone: (03) 9238 2200  
 Facsimile: (03) 9238 2387  
[www.iveco.com.au](http://www.iveco.com.au)

ACCO Spec Sheet (MAY 2009)

## FEATURES

- Isringhausen air-suspended driver's seat with integral lap/sash seat belt, fore and aft isolator and adjustable lumbar support.
- Isringhausen fixed passenger's seat with integral lap/sash seat belt
- Power Windows
- Sound insulating vinyl floor mats.
- Overhead console.
- Air conditioning.
- Triple electric 2-speed windscreen wipers/washers with intermittent speed.
- Heater-demister with 3-speed fan including face level vents.
- Twin speaker, AM/FM radio/CD with auto tune, digital clock and removable face security.
- Heated and motorised west coast type mirrors with convex section.
- Jack, rim wrench, handle and extension.
- Interior and exterior sunvisors.
- Chassis-mounted dual air horns.
- In-cab body builder electrical and air supplies including remote PTO throttle wiring connectors and 12V accessory socket.
- Optional:**
- Remote operated motorised mirrors.
- Fixed double or single air suspended passenger seat.
- Optional:**
- Heavy duty trim package comprising heavy duty Urathane floor mats, passenger foot rest and door scuff plates.

## INSTRUMENTATION

- Gauges:** Electronic speedometer and tachometer, dual needle air pressure, coolant temperature, engine oil pressure, automatic transmission temperature, voltmeter, hour meter and fuel level.
- Warning lights:** Brake failure, park brake activated, low engine oil pressure, turn signal on, hazard lights activated, high beam activated, cab latch insecure, power divider lock activated, driver controlled diff locks activated (where fitted), PTO activated, cruise control activated, engine ECU failure, and low coolant level.
- Warning buzzer:** Low brake air pressure, low oil pressure, low auto transmission coolant level horn alert sounds if driver door opens and park brake has not been applied.

**ACCO**

**Distributor - Tipper - Hauler  
 SPECIFICATIONS**

**IVECO**