

ENGINE

Cummins ISC-05 (ADR80/02 approved)

Type: Turbocharged, constant pressure direct injected diesel engine with cruise control and programmable hand throttle/ PTO control.

Number of cylinders: 6

RAC HP rating: 48.4

Total displacement: 8.3 litre

Maximum output: 260hp (194kW) @ 2000rpm

Maximum torque: 800 lb ft (1085Nm) @ 1300rpm

Maximum output: 285hp (213kW) @ 2000rpm

Maximum torque: 800 lb ft (1085Nm) @ 1300rpm

Maximum output: 315hp (235kW) @ 2000rpm

Maximum torque: 950 lb ft (1288Nm) @ 1300rpm

Governed engine speed: 2200rpm.

Clutch engagement torque: 678Nm.

Road speed limiting to 100kmh.

Idle timer.

Perforated muffler heat shield.

Donaldson Cyclopac 356mm dry element air cleaner.

Optional: Exhaust brake.

TRANSMISSIONS

Eaton RTO-11909ALL 11 speed constant mesh.

Allison Gen 4 3500 6 speed automatic with 260hp and 285hp.

Allison Gen 4 3200 6 speed automatic with 315hp.

Rear engine PTO with pump mounting brackets (manual only).

Transmission-mounted PTO, 1.16 times engine speed with pump mounting brackets.

REAR AXLE

Meritor MT20-145GA with aluminium differential carriers.

(Same as RT40-145GA)

Capacity: 18.1 tonne.

Ratios: 5.29, 6.43.

Optional: Alloy rear hubs.

Meritor MT20-145G (Same as RT40-145G)

Capacity: 18.1 tonne.

Ratios: 5.29, 6.43.

Optional:

Driver controlled differential locks both axles.

Alloy rear hubs.

REAR SUSPENSION

Hendrickson HN402

Type: Walking beam with rubber bolster VariRate springs and shock absorbers.

Capacity: 18.0 tonne.

Hendrickson HAS460

Type: Air with shock absorbers and dump control.

Capacity: 18.0 tonne.

FRONT AXLE

Dana I-140SG

Type: Forged steel I beam.

Capacity: 6.6 tonne.

FRONT SUSPENSION

Single steer type: HD Parabolic steel spring with threaded pins and bushes and double acting shock absorbers.

Capacity: 7.2 tonne.

Twin Steer type: HD Multi-leaf springs with threaded pins and bushes and double acting shock absorbers.

Capacity: 13.4 tonne.

Optional:

Airtek: Air suspension with integrated axle, leaf springs and shock absorbers.

Capacity: 6.6 tonne (single steer) 13.2 tonne (twin steer)

BRAKES

Type: Dual air S cam.

Front: Meritor Q-Plus 419mm diameter x 152mm drum brakes.

Rear: Meritor Q-Plus 419mm diameter x 178mm drum brakes.

Park: Spring actuated park brake acting on rear wheels on 6x4 and on second steer and rear wheels on 8x4.

Centrifuse brake drums on all axles.

Dessicant type air dryer (CR 2000).

STEERING

Sheppard M110 power steering with gear-driven pump.

Tilting and telescoping steering column with 463mm diameter steering wheel.

FUEL SYSTEM

6x4 130-litre capacity cylindrical aluminum tank.

Optional: 270-litre capacity cylindrical aluminium tank.

8x4 270-litre capacity cylindrical aluminum tank.

Tanks mounted right hand side of chassis.

Engine mounted paper element fuel filter.

CHASSIS

Type: High tensile, heat treated, alloy steel channel.

Yield strength: 760 MPa.

Standard chassis dimensions: 257mm x 89mm x 8mm.

Standard section modulus: 243cm³.

Heavy duty centrally mounted front towing pin.

Square rear end of frame.

FUPD on 6x4 model.

Hydraulic pump mounting bracket to suit.

ELECTRICAL SYSTEM

Type: 12 volt, negative to earth.

Batteries: 3 x 12V, 550amp SAE cold cranking current, maintenance free.

Alternator: 12V 130amp.

Headlamps: 60/55 watt circular quartz halogen.

Driving lights: 55 watt circular quartz halogen.

Reverse warning buzzer.

Optional: Cab roof mounted revolving amber light.

CLUTCH

Eaton SAS 1402 twin plate ceramic.

Diameter: 356mm.

Lining area: 1208cm².

WHEELS & TYRES

Wheels: 285PCD Alcoa Alloy wheels with machine finish

Front tyres: Michelin XZE2+ 295/80R22.5 (6.5 tonne FA rating.)

11R22.5 for 8x4. Tubeless radial

Rear tyres: Michelin XDE2+ 11R22.5 tubeless radial.

Spare rim supplied loose.

Optional:

6-spoke cast hubs with 8.25 x 22.5 DC

Durabright finish for alloy wheels

Spare wheel carrier (supplied loose).

Alternative Michelin tyre sizes and tread patterns available.

COOLING SYSTEM

Radiator area: 5049cm².

Charge cooler frontal area: 4461cm² up to 285Hp & 5015 cm² for 315Hp.

Air to oil transmission cooler for automatic models mounted on the chassis.

Viscous drive fan, crankshaft driven.

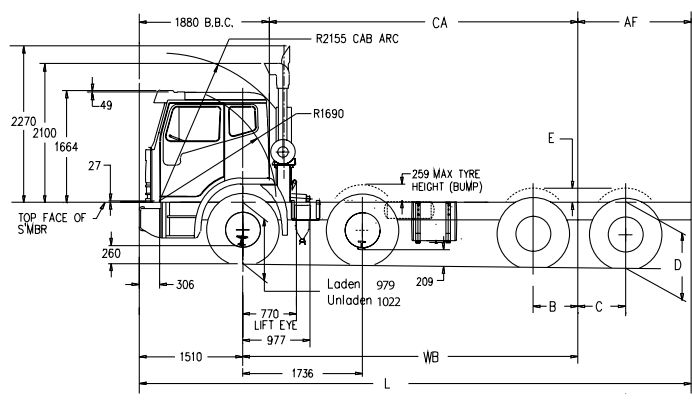
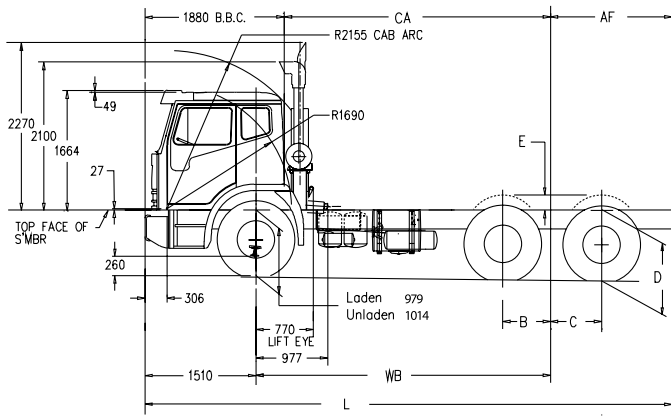
Heavy duty radiator guard and stone shield.

Optional: Supplementary cooling fan.

ACCO

**6x4 8x4 Agitator
SPECIFICATIONS**

IVECO



DRIVESHAFTS

Spicer 1810 Series main shaft with Eaton transmission.
 Spicer 1710 Series main shaft with Allison transmission.
 Spicer 1710 Series inter-axle shaft with all transmissions.

CAB CONSTRUCTION

2180mm wide galvanized steel cab with hydraulic lift and latch.
 Four-point cab mounting system with rubber block front and air springs dampers at the rear.
 Double-sided zinc steel exterior and floor panels.
 Electro-phoretic deposited undercoat with acrylic hi-bake enamel finishing coat.
 Laminated safety glass windscreen, toughened safety glass elsewhere.

FEATURES

Isringhausen air-suspended driver's seat with integral lap/sash seat belt, fore aft isolator and adjustable lumbar support.
 Isringhausen fixed passenger's seat with integral lap/sash seat belt.
 Power Windows. Overhead console. Air conditioning with pollen filter. Heavy duty trim package comprising heavy duty Urethane floor mats, passenger foot rest and door scuff plates.
 Triple electric 2-speed windscreen wipers/washers with intermittent speed. Heater-demister with 3-speed fan including face level vents. Heated west coast type mirrors with convex section.
 Twin speaker, AM/FM radio/CD with auto tune, digital clock and removable face security. Jack, rim wrench, handle and extension.
 Interior and exterior sunvisors. Chassis-mounted dual air horns.
 In-cab body builder electrical and air supplies including remote PTO throttle wiring connectors and 12V accessory socket.

Optional:

Remotely operated motorised mirrors.
 Fixed double or air suspended single passenger seat.

INSTRUMENTATION

Gauges: Electronic speedometer and tachometer, dual needle air pressure, coolant temperature, engine oil pressure, automatic transmission temperature, voltmeter, hour meter and fuel level.
 Warning lights: Brake failure, park brake activated, low engine oil pressure, turn signal on, hazard lights activated, high beam activated, cab latch insecure, power divider lock activated, driver controlled diff locks activated (where fitted), PTO activated, cruise control activated, engine ECU failure, high auto transmission oil temperature and low coolant level.
 Warning buzzer: Low brake air pressure, low oil pressure, low auto transmission coolant level horn alert sounds if driver door opens and park brake has not been applied.

MASS RATINGS

GVM 6x4	24.5 tonne
GCM 6x4	30.0 tonne
GVM 8x4	30.0 tonne
GVM 8x4 auto	30.0 tonne
GCM 8x4 manual - 315 Hp rating	42.5 tonne

All ratings apply with suitably rated engine, transmission, suspension and tyres. GVM, GCM, driveline, frame, and suspension combinations are subject to application engineering review.

CHASSIS DIMENSIONS (Dimensions in mm)

WB	4000 [#]	5000*	5400*
AF	1870 [#]	1800*	1800*
CA	3630 [#]	4630*	5030*
L	7380 [#]	8310*	8710*
Turning circle [£]	16450 [#]	18350*	19820*
Chassis Width	867	867	867

[#]6x4 *8x4

[£] For unladen cab-chassis. For wall-to-wall turning circle add 1740 mm.

Refer to bodybuilder diagrams for fuel tank lengths, locations and further details.

SUSPENSION (Dimensions in mm)

	B	C	D		E
			Laden	Unladen	
Hendrickson HN402	650	694	964	1041	172
Hendrickson HAS460	658	658	1000	1025	105
Hendrickson PAX460	664	669	987	987	114

IVECO Trucks Australia Limited

A.B.N. 86 004 065 061

Princes Hwy, Dandenong, Victoria 3175

P.O. Box 117 Dandenong, Victoria 3175

Telephone: (03) 9238 2200

Facsimile: (03) 9238 2387

www.iveco.com.au

ACCO Spec Sheet (MAY 2009)

ACCO

**6x4 8x4 Agitator
SPECIFICATIONS**

IVECO